

# CENTRAL PARK 1

1 CAR PARKING

3 BEDROOM

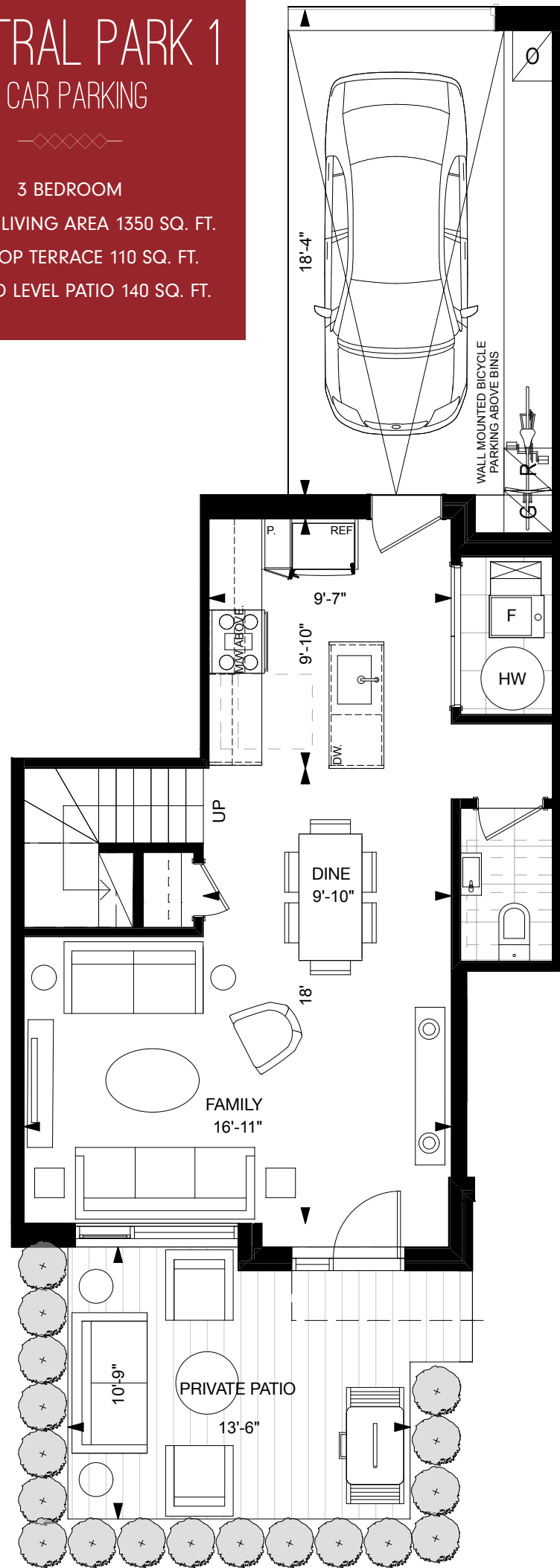
INDOOR LIVING AREA 1350 SQ. FT.

ROOFTOP TERRACE 110 SQ. FT.

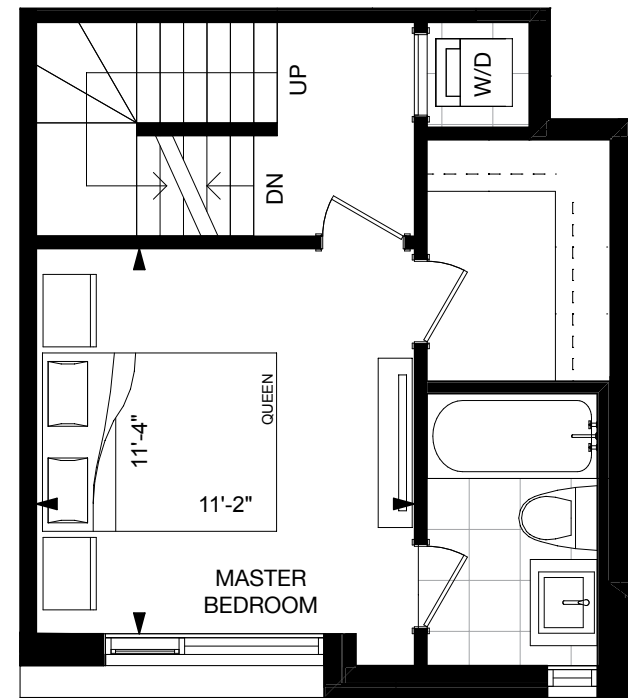
GROUND LEVEL PATIO 140 SQ. FT.



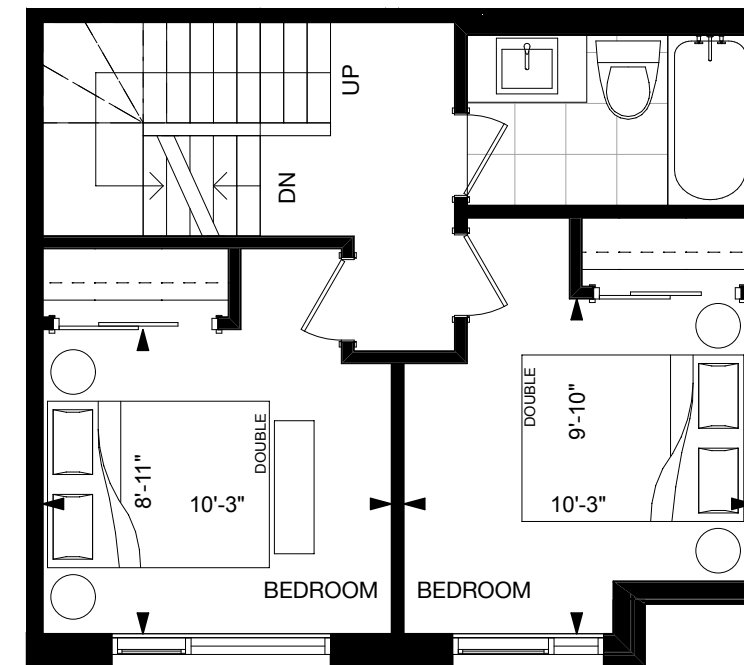
THE YORKDALE  
TOWNHOMES  
ON THE PARK



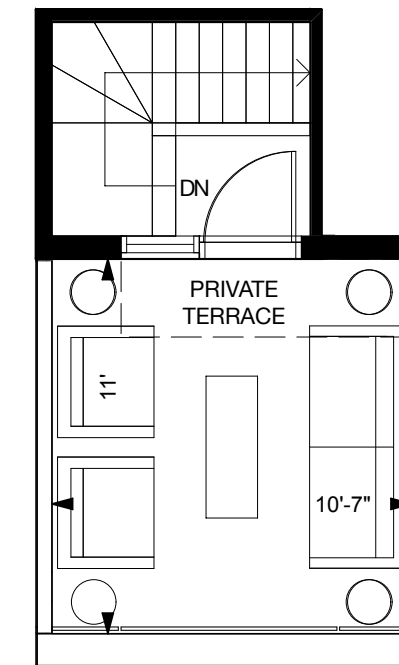
GROUND LEVEL



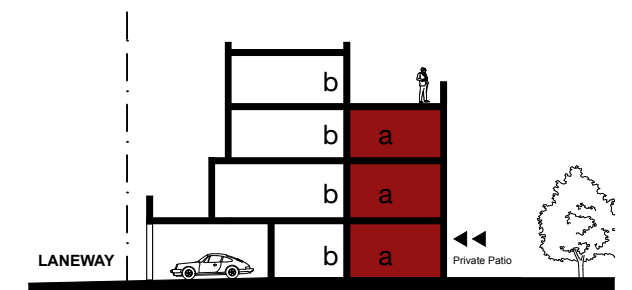
SECOND LEVEL



THIRD LEVEL



FOURTH LEVEL



PRICES AND SPECIFICATIONS SUBJECT TO CHANGE WITHOUT NOTICE. E. & O.E.  
THE DIMENSIONS SHOWN ON THIS PLAN ARE APPROXIMATE ONLY.  
ACTUAL USEABLE FLOOR SPACE WITHIN THE UNIT MAY VARY FROM ANY STATED FLOOR AREAS OR DIMENSIONS ON THIS PLAN.  
FOR MORE INFORMATION ON THE METHOD USED FOR CALCULATING THE FLOOR AREA OF ANY UNIT REFERENCE SHOULD BE MADE TO BUILDER BULLETIN NO.22 PUBLISHED BY TARION.  
THE SIZE, LOCATION AND/OR CONFIGURATION OF THE WINDOWS AND SPANDREL GLASS SHOWN MAY BE CHANGED, VARIED OR MIRRORED.